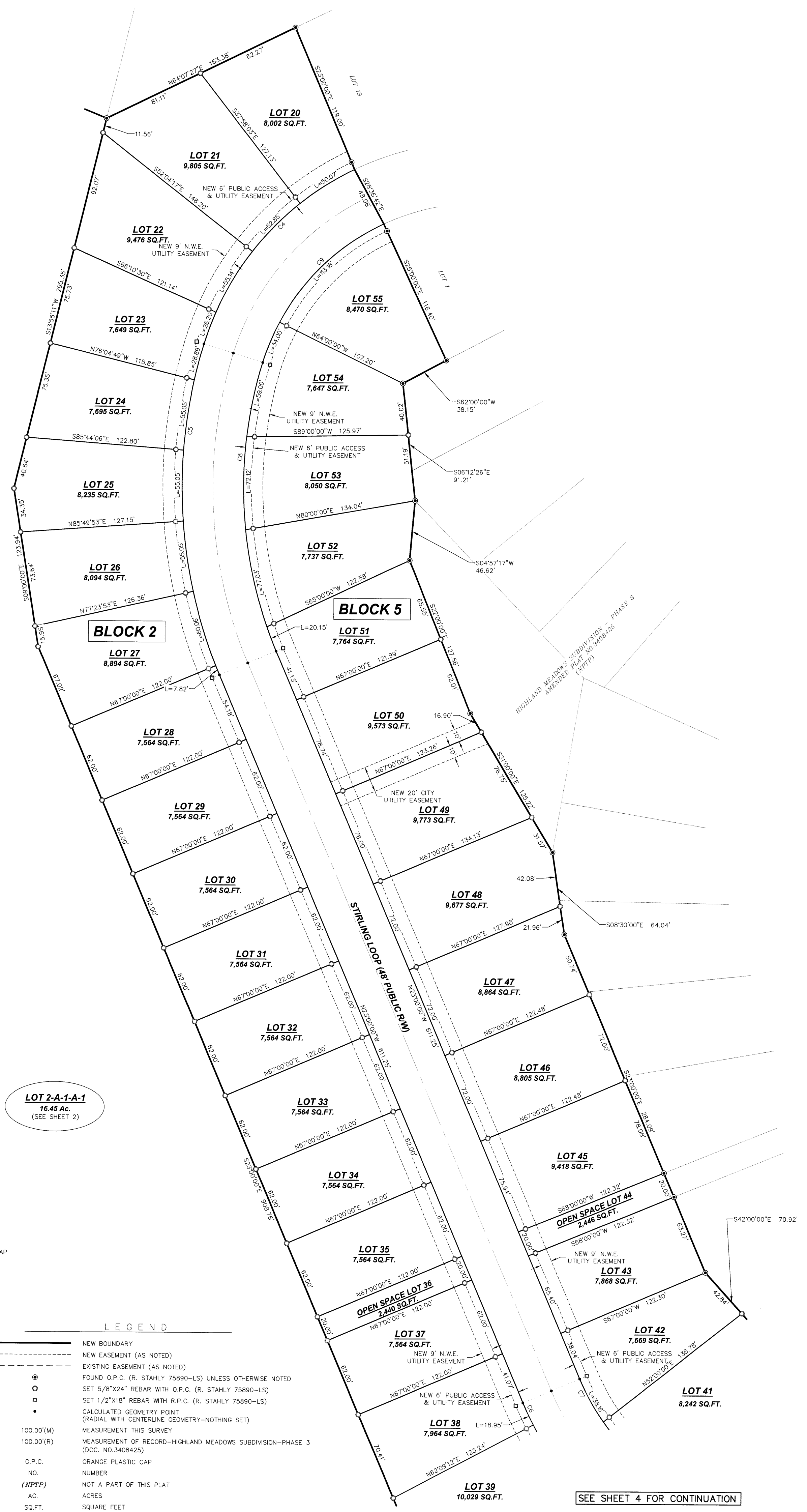
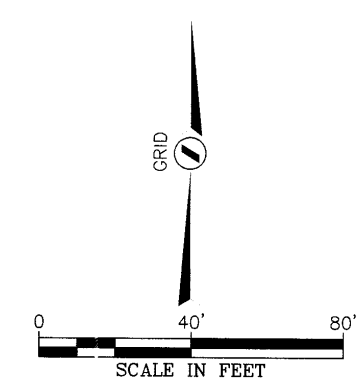


AMENDED PLAT OF LOT 2-A-1-A OF THE HIGHLAND MEADOWS SUBDIVISION - PHASE 3 TO BE KNOWN AS HIGHLAND MEADOWS SUBDIVISION - PHASE 4

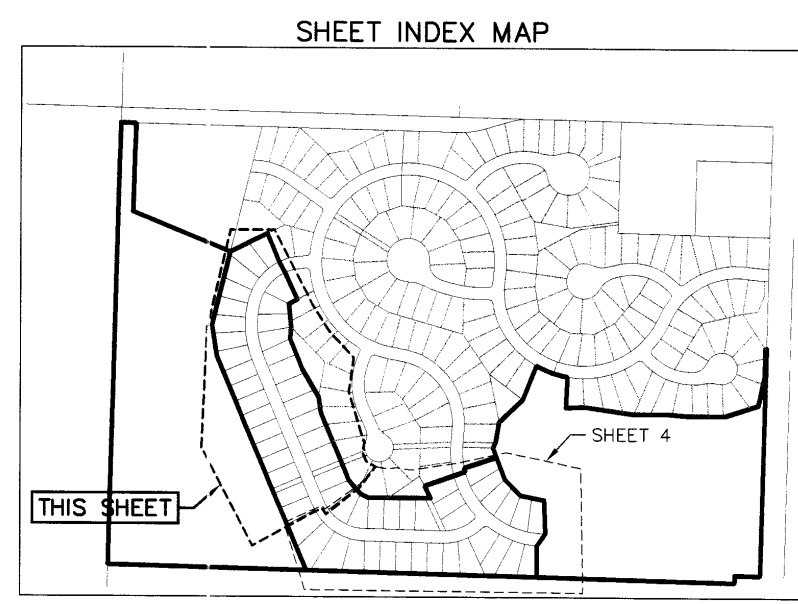


Parcel Curve Table				
Curve #	Length	Radius	Delta	Chord Length
C4	184.26'	224.00'	047°07'49"	N40° 41' 22"E 179.11'
C5	261.91'	374.00'	040°07'28"	N2° 56' 16"W 256.59'
C6	256.18'	224.00'	065°31'37"	N55° 45' 49"W 242.45'
C7	201.28'	176.00'	065°31'37"	N55° 45' 49"W 190.49'
C8	228.30'	326.00'	040°07'28"	N2° 56' 16"W 223.66'
C9	147.18'	176.00'	047°54'47"	N41° 04' 51"E 142.93'



BASIS OF BEARING
CONTROL POINT #1 (GPS BASE) - SET 3" REBAR WITH SEA CONTROL RED PLASTIC CAP
OPUS POSITION OBSERVED ON 11-14-2018
MONTANA STATE PLANE, NAD83, MONTANA 2500
PROJECTED TO GRID UNITS AT:
NORTH LATITUDE: 46°35'59.95615"
WEST LONGITUDE: 111°55'01.73622"
MERIDIAN CONVERGENCE ANGLE = (-)01'46"05"
ALL DISTANCES ARE IN INTERNATIONAL FOOT UNITS.

SURVEY NOTES:
1. FRONT LOT LINE MONUMENTS ARE WITNESS CORNERS SET ON THE BOUNDARY OF THE NEW 6' PUBLIC ACCESS AND UTILITY EASEMENT AND DO NOT REPRESENT THE TRUE LOT CORNER.
2. CURVE GEOMETRY MONUMENTS ARE REFERENCE MONUMENTS SET ON THE NEW 6' PUBLIC ACCESS AND UTILITY EASEMENT BOUNDARY AND ARE RADIAL TO THE CURVE GEOMETRY THEY REFERENCE.



LOT 2-A-1-A-1
16.45 AC.
(SEE SHEET 2)

- LEGEND
- NEW BOUNDARY
 - - - - - NEW EASEMENT (AS NOTED)
 - - - - - EXISTING EASEMENT (AS NOTED)
 - FOUND O.P.C. (R. STAHLY 75890-LS) UNLESS OTHERWISE NOTED
 - SET 5/8"x24" REBAR WITH O.P.C. (R. STAHLY 75890-LS)
 - SET 1/2"x18" REBAR WITH O.P.C. (R. STAHLY 75890-LS)
 - CALCULATED GEOMETRY POINT (RADIAL WITH CENTERLINE GEOMETRY-NOTHING SET)
 - 100.00(M) MEASUREMENT THIS SURVEY
 - 100.00(R) MEASUREMENT OF RECORD-HIGHLAND MEADOWS SUBDIVISION-PHASE 3 (DOC. NO.3408425)
 - O.P.C. ORANGE PLASTIC CAP
 - NO. NUMBER
 - (N/PTP) NOT A PART OF THIS PLAT
 - AC. ACRES
 - SQ.FT. SQUARE FEET
 - N.W.E. NORTHWESTERN ENERGY

STAHLY ENGINEERING & ASSOCIATES
PROFESSIONAL ENGINEERS & SURVEYORS
www.steeng.com

2223 MONTANA AVE. STE. 201 BILLINGS, MT 59101 Phone: (406)601-4055

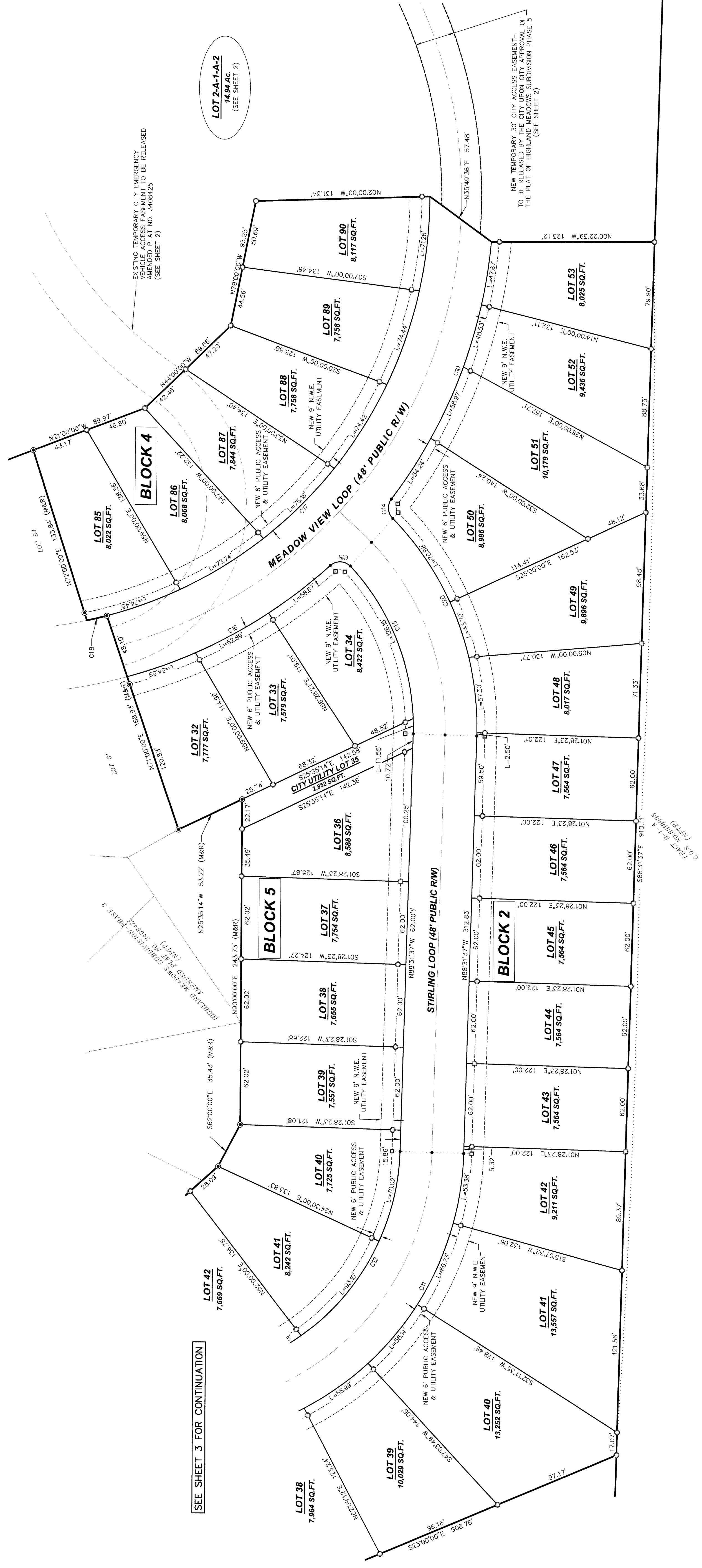
3530 CENTENNIAL DR. HELENA, MT 59601 Phone: (406)442-8594 Fax: (406)442-8557

851 BRIDGER DR. STE. 1 BOZEMAN, MT 59715 Phone: (406)522-8534 Fax: (406)522-9528

AMENDED PLAT											
COUNTY: LEWIS & CLARK											
PRINCIPAL MERIDIAN, MONTANA											
1/4	SEC	T	R	1/4	SEC	T	R	FIELD: RJS DRAWN: JMB CHECKED: RJS DATE: 9/23/2024			
25	10N	3W						SHEET 3 OF 4			

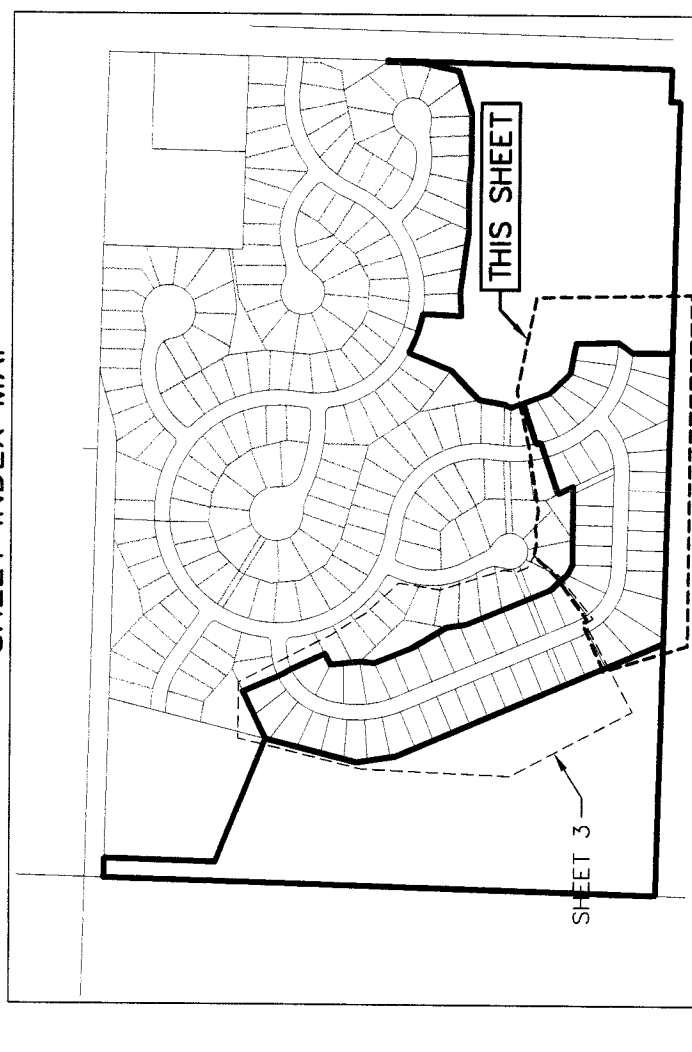
SEE SHEET 4 FOR CONTINUATION

AMENDED PLAT OF LOT 2-A-1-A OF THE HIGHLAND MEADOWS SUBDIVISION - PHASE 3 TO BE KNOWN AS HIGHLAND MEADOWS SUBDIVISION - PHASE 4



SEE SHEET 3 FOR CONTINUATION

LOT 2-A-1-A-2
14.94 AC.
(SEE SHEET 2)



SHEET INDEX MAP

Parcel Curve Table

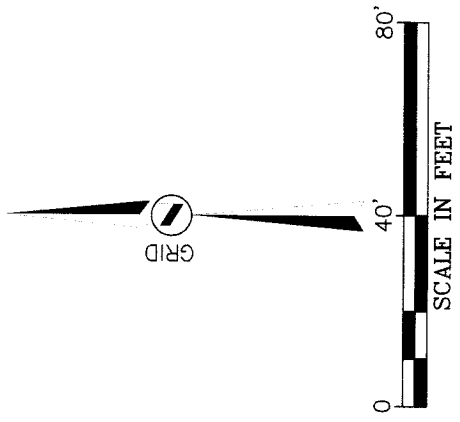
Curve #	Length	Radius	Delta	Chord Direction	Chord Length
C10	209.41'	374.00'	032°04'52"	N69°00'35"W	206.69'
C11	256.18'	224.00'	065°31'37"	N55°45'49"W	242.45'
C12	201.28'	176.00'	065°31'37"	N55°45'49"W	190.49'
C13	137.70'	176.00'	044°49'44"	S89°03'31"W	134.22'
C14	15.66'	11.00'	081°41'42"	S86°11'01"W	14.39'
C15	171.12'	11.00'	089°09'56"	S2°03'51"W	15.44'
C16	176.15'	374.00'	026°59'09"	S29°01'22"E	174.53'
C17	428.01'	326.00'	075°13'27"	S92°37'49"E	397.92'
C18	15.49'	326.00'	002°31'18"	S13°39'26"E	15.48'
C20	180.37'	224.00'	046°08'13"	S68°24'16"W	175.54'

LEGEND

- NEW BOUNDARY
- NEW EASEMENT (AS NOTED)
- EXISTING EASEMENT (AS NOTED)
- FOUND O.P.C. (R. STAHLY 75890-LS) UNLESS OTHERWISE NOTED
- SET 5/8"X24" REBAR WITH O.P.C. (R. STAHLY 75890-LS)
- SET 1/2"X18" REBAR WITH R.F.C. (R. STAHLY 75890-LS)
- SEAL CONTROL RED PLASTIC CAP
- RADIAL WITH CENTERLINE GEOMETRY - NOTHING SET
- MEASUREMENT THIS SURVEY
- MEASUREMENT OF RECORD - HIGHLAND MEADOWS SUBDIVISION - PHASE 3
- (O.C. NO. 3-468425)
- ORANGE PLASTIC CAP
- O.P.C.
- NO.
- (NPTP)
- AC.
- SQ.FT.
- N. W.E.

BASIS OF BEARINGS:
CONTROL POINT CORNERS BASED - SET 3' REBAR WITH
SEAL CONTROL RED PLASTIC CAP
O.P.C. POSITION OBSERVED ON 11-14-2018
NORTH DATUM: NAD 83
NORTH LATITUDE: 46°35'59.95615"
WEST LONGITUDE: 111°50'01.73827"
ALL DISTANCES ARE IN INTERNATIONAL FOOT UNITS.

SURVEY NOTES:
1. FRONT LOT LINE MONUMENTS ARE WITNESS CORNERS SET ON THE BOUNDARY OF THE NEW 6' PUBLIC ACCESS AND UTILITY EASEMENT AND DO NOT REPLACE THE ORIGINAL MONUMENTS SET ON THE BOUNDARY.
2. NEW 6' PUBLIC ACCESS AND UTILITY EASEMENT BOUNDARY AND ARE RADIAL TO THE CURVE GEOMETRY THEY REFERENCE.



AMENDED PLAT

1/4	SEC	T	R
25	10N	3W	

COUNTY: LEWIS & CLARK
PRINCIPAL MERIDIAN: MONTANA

STAHLY ENGINEERING & ASSOCIATES
PROFESSIONAL ENGINEERS & SURVEYORS

www.stahlyeng.com
3530 CENTENNIAL DR., STE. 1
BILLINGS, MT 59101
Phone: (406) 442-8594
Fax: (406) 522-9524

FIELD: RJS
DRAWN: JMB
CHECKED: RJS
DATE: 9/23/2024
SHEET
4 OF 4